



West Midlands Ambulance Service
University NHS Foundation Trust

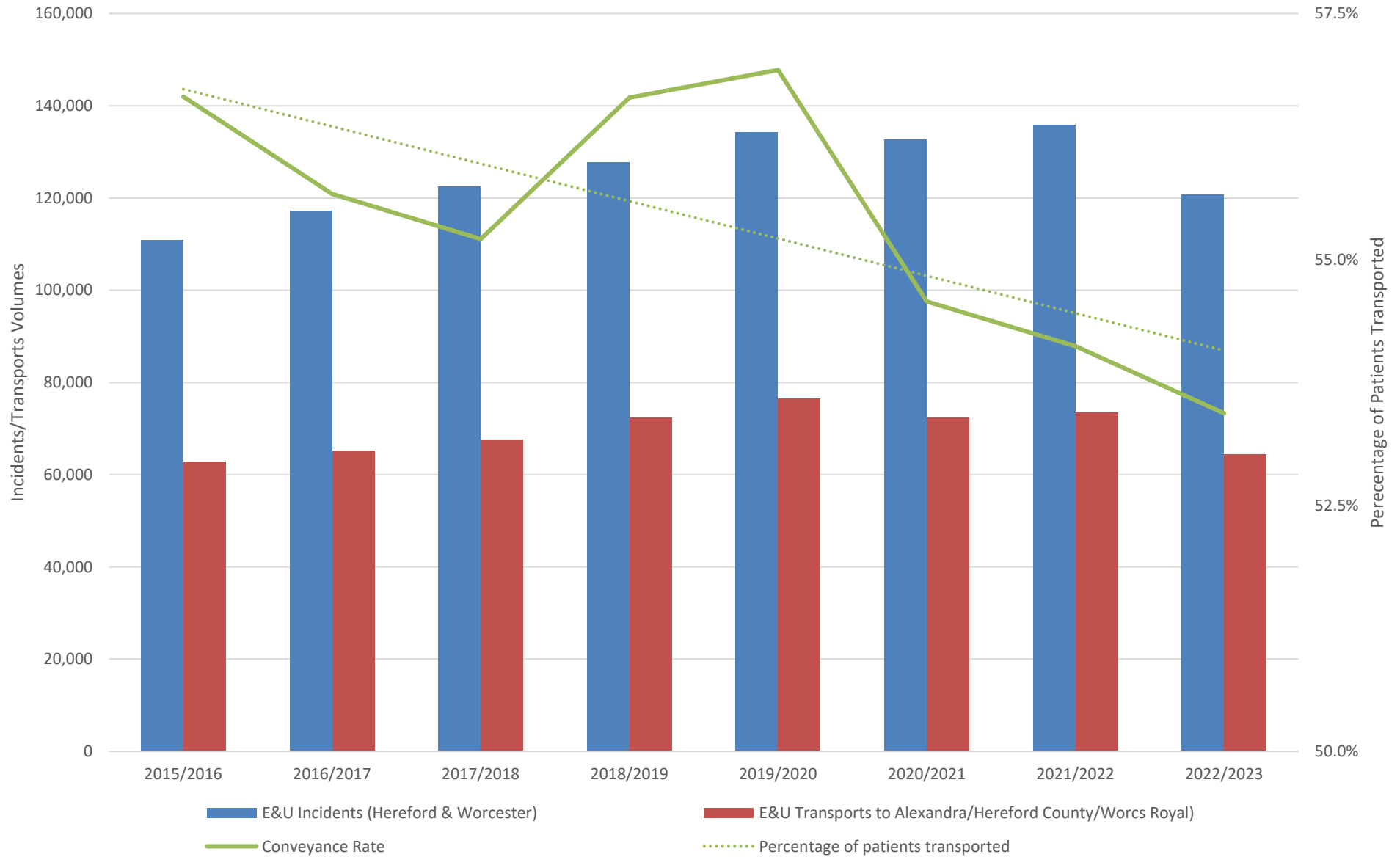


Herefordshire & Worcestershire ICS Demand, Hospital Delays & Performance

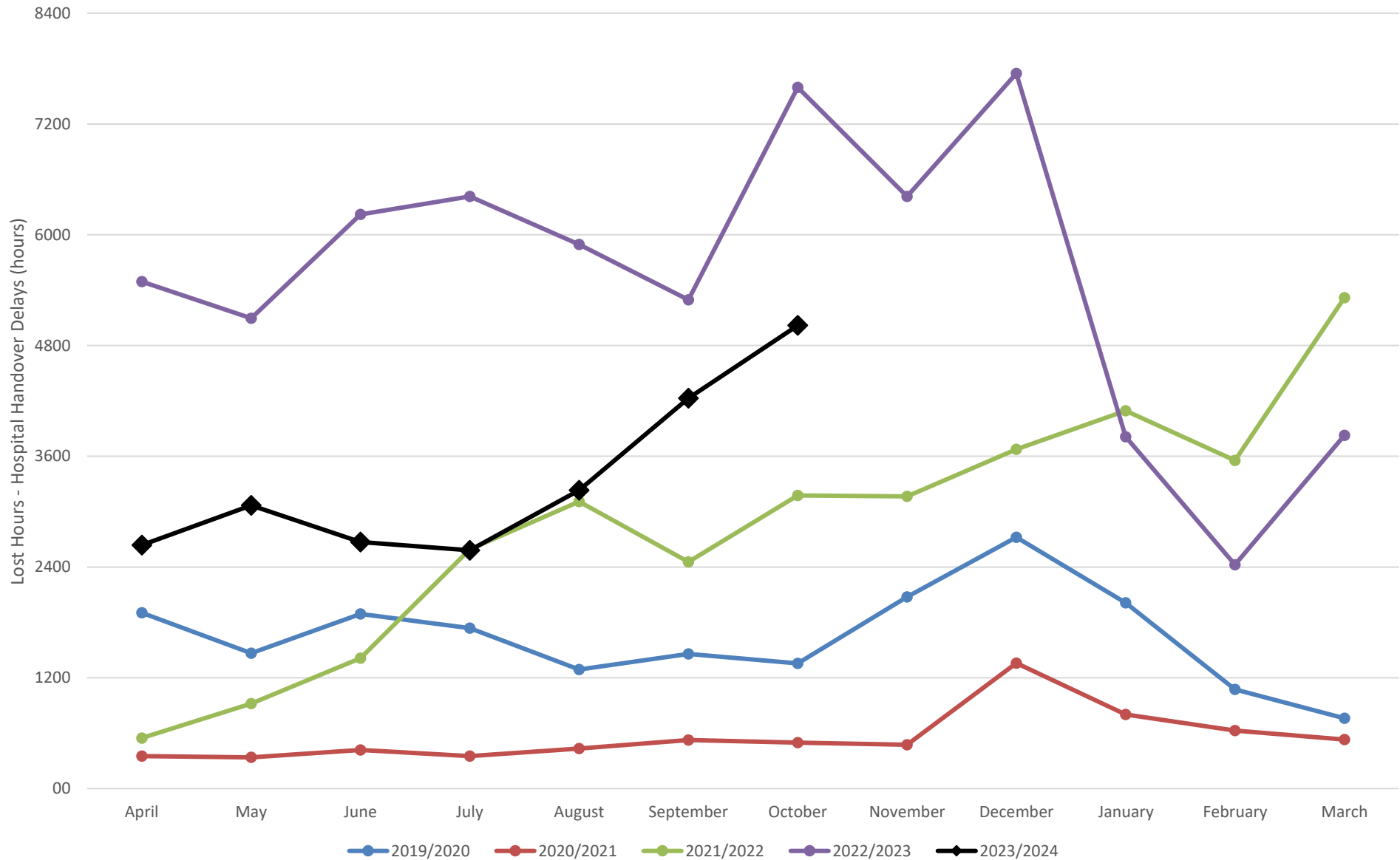
October 2023

Trust us to care.

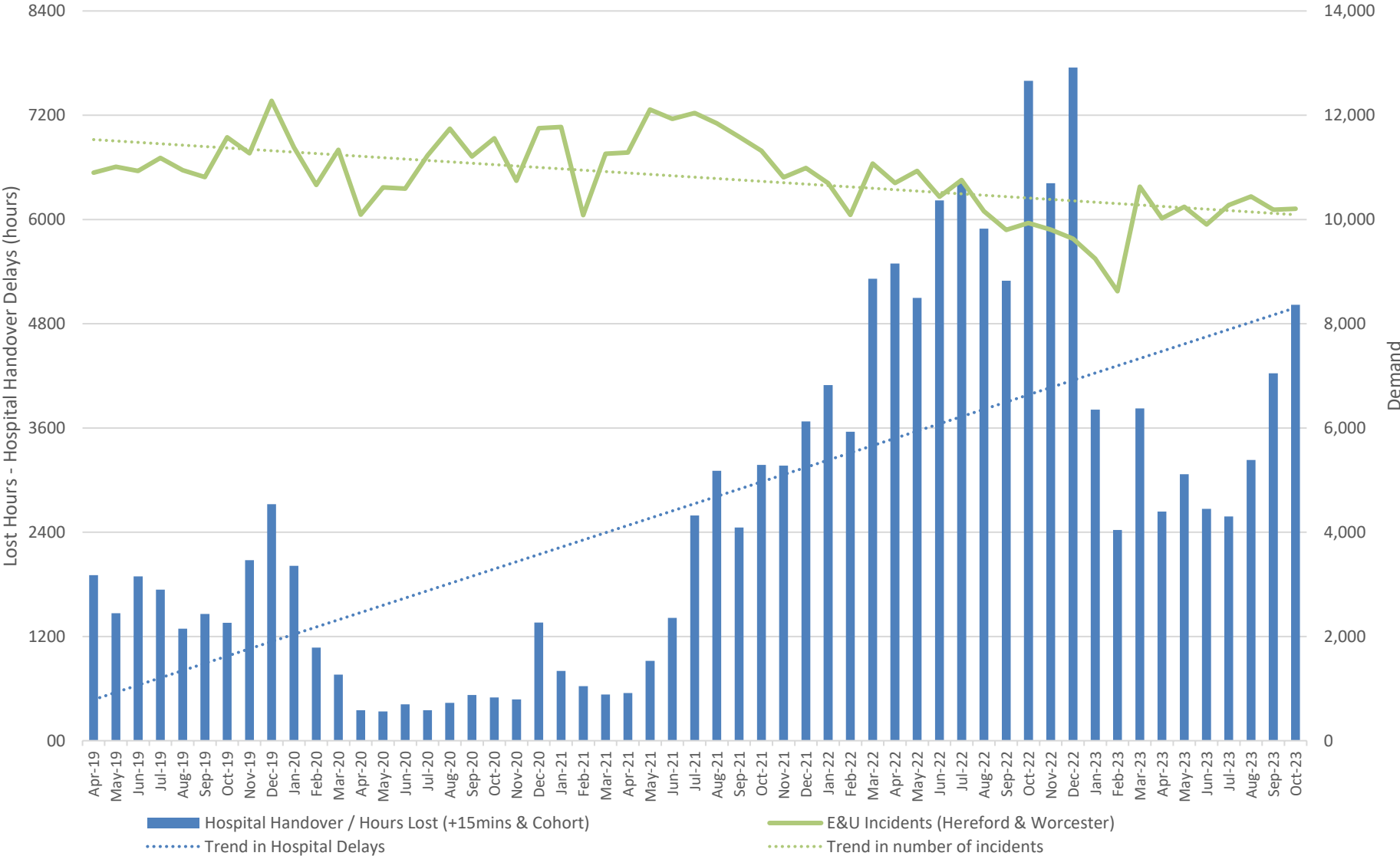
Incidents, Transports & Conveyance Rate Year on Year



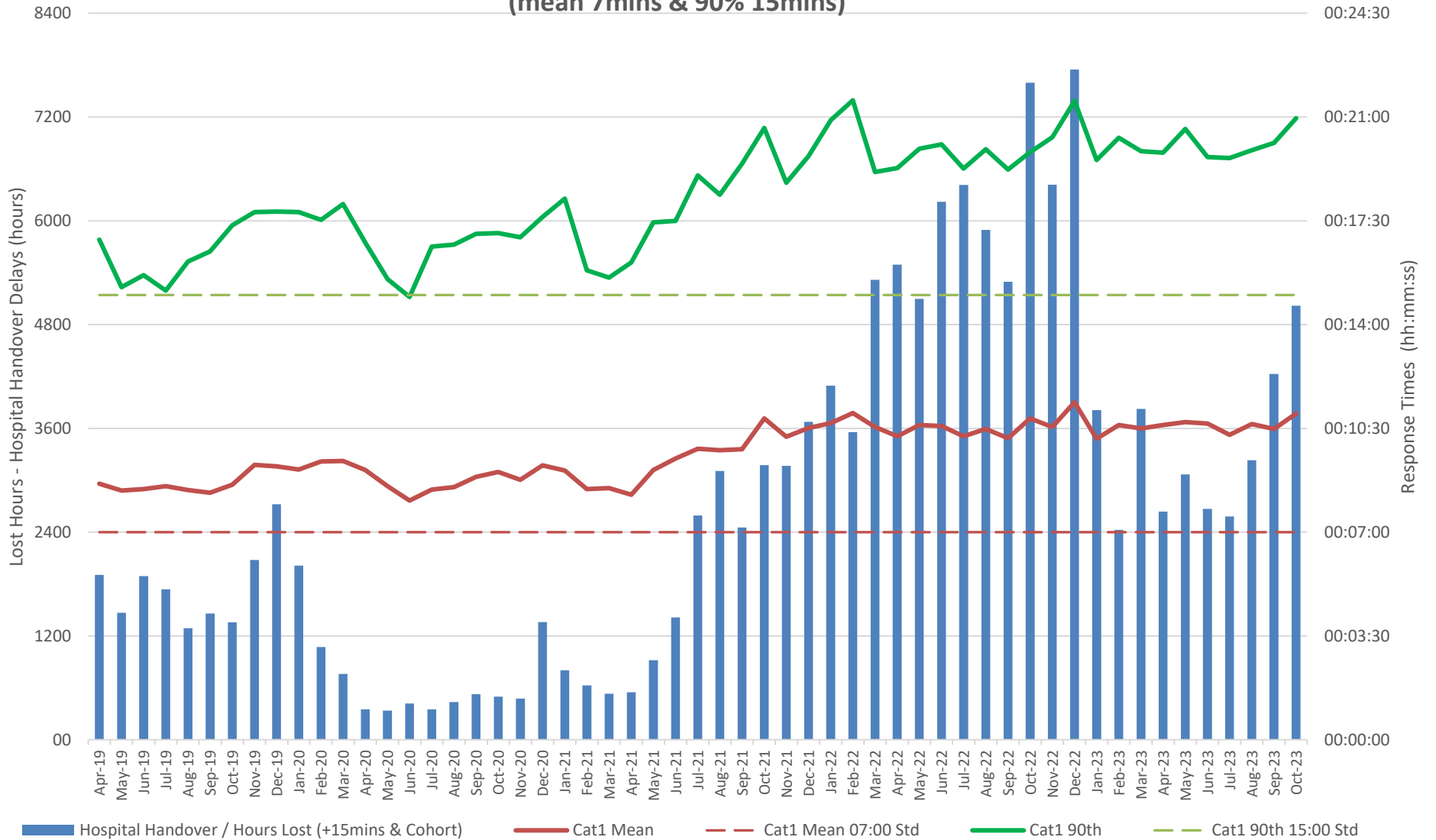
H&W Hospital Handover Delays >15mins (inc cohorting) - Total Hours by Month



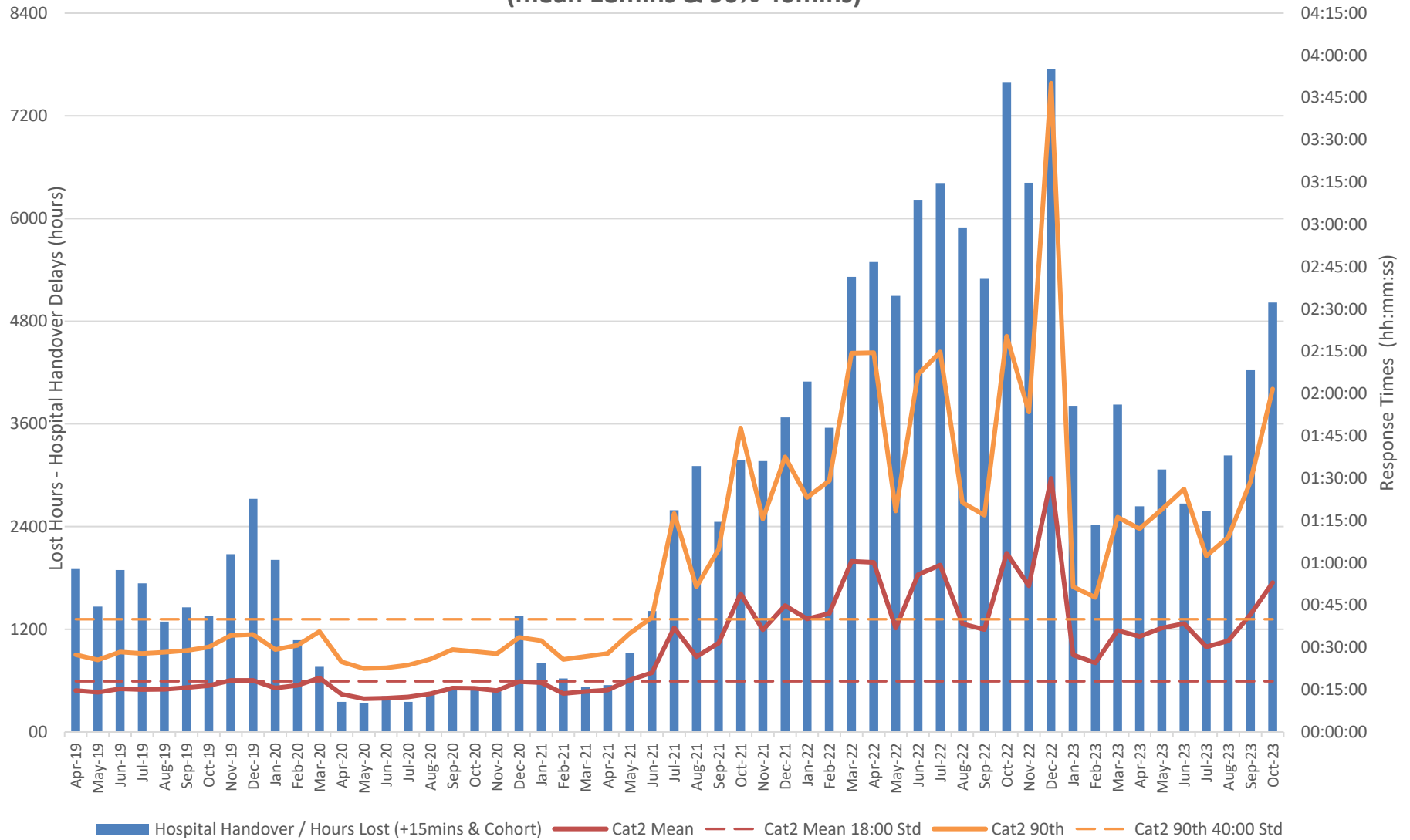
Operational Demand & Handover Delays



Hospital Handover Delays > 15mins and Cohorting vs Operational Performance Cat 1 (mean 7mins & 90% 15mins)



Hospital Handover Delays > 15mins and Cohorting vs Operational Performance Cat 2 (mean 18mins & 90% 40mins)



Hospital Handover Delays > 15mins and Cohorting vs Operational Performance Cat 3 (mean 60mins & 90% 120mins)

